

MapGarbage

UnrealTournament Editor Add-On Builder
variant December 2019
- english excluded from document -

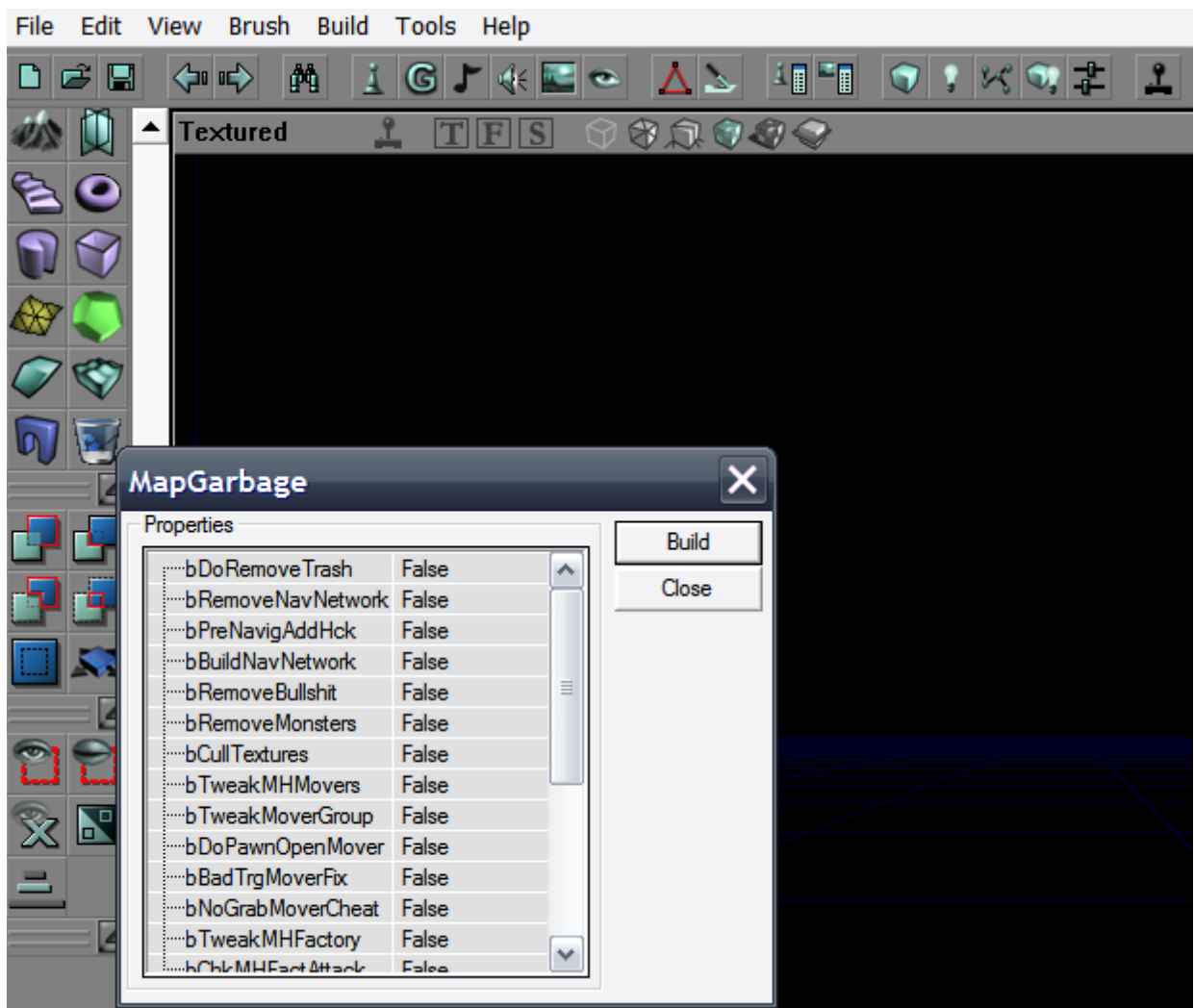
Description:

This is an UnrealTournament Editor custom builder tool which operates in Editor.

Purpose:

Some map fixings/repairs are time consuming and we may also have glitches. Then if we use a builder like this we do the necessary maneuvers with a few mouse clicks, we have enough fixes here for that type of MonsterHunt game that is constantly brutalized with poor quality maps and for a game without skills. Of course, we are not just talking about MonsterHunt, we also have testing and reporting functions for other types of games when we refer to the navigation network of the studied map or in the manufacturing process. Another common attribute of this builder is the ability or attempt to eliminate duplicate actors who are not the best thing on a map after copy-paste operations (even stealing assets from other maps). This feature works or not depending on what kind of actors are duplicated. Actors type InventorySpot duplicated can cause big problems and it's needed "manual washing" of the map. Another tutorial for this will be another chapter to discuss.

Operation:



By clicking the Right Mouse button on that Glass/TrashCan Icon from Editor (setup explained later) you can open this Builder.

We have to mark True options which we want to launch and then clicking on BUILD button shown. Once finished work or if some scroll visual problems from

Editor are showing up (Editor is a trash disregarding what you say anyway), just close Builder and re-Open it (right click - in default OS's mouse setup) in case that you still need it.

Explanations for features:

Value	Value dependent	Explanations:
bDoRemoveTrash	-	It's similar with Command OBJ GARBAGE
bRemoveNavNetwork	-	This option will delete Paths-Net for getting a clean map (requires Save Map, Exit Editor, Re-Open, Re-Load map) for removing all old references and old reachspecs still hosted and not used (like InventorySpot2000) for a future clean build.
bTryFixBadPaths	-	This option is based on pathing docs by Epic and ignored by Epic :/ where any NavigationPoint should have an optimal minimum 50 UU distance from other one - this is mainly for PathNode class. It will blindly remove such PathNode closer to other NavigationPoint. This option will prevent crashing map in game by removing navigation Network applying tweak and building Navigation again.
bPreNavigAdHck	-	With this option used before starting to add PathNodes (MANUALLY !!!), we can tweak their properties until job is being done for making them able to fit in small spots where Editor can still link them but they don't fit there for placing - BIG Junks in SMALL holes. Their look in game is normal by default but... we have new routes set. Requires Bot Pathing knowledge. Here we have other placement for InventorySpot Marker toward inventories not like in default build.
bBuildNavNetwork	-	Similar to command Paths Define used for Constructing Paths Net using current PathNodes.
bRemoveBullshit	-	It was pretty much "fascinating" to see new "mappers" using Commanders and player types added in map with no single purpose and neither any LOGIC. This command will find these useless actors and perform their removal.
bRemoveMonsters	-	For some default match which might go messy with creatures added in map, this option will remove all Pawns. Addressing normal DM and CTF map fixes. You don't have to look where the nasty creature is, you can push button and builder will do the task for you.
bCullTextures	-	This operates similar to command Texture Cull , but without writing it in Console after ending mapping work.
bTweakMHMovers	bTweakMoverGroup Is adding a Group for some Movers - requires restart/reload and activating new Groups created. bDoPawnOpenMover Makes Movers Accessible by any Pawn except Mission Critical ones with bTriggerOnceOnly set. bBadTrgMoverFix Some Mission related Movers are set TriggerControl creating dumb errors when are linked with Dispatchers and other stuff, a mess which we can fix, AND MAYBE FINALLY LEARNING THESE AFTER 20 YEARS... bNoGrabMoverCheat Cannot be something more annoying than looking at a Bot or a Player opening a critical door without to do the job in cause first - by CHEATING, lol, originally USELESS added by Epic :eye poking:	Used in MH Maps and doing what default mutators are doing with movers and even more... Ideas of messing up maps are a lot so this is fine tuning not an entire fix. Movers set for some group will need browsing groups, refreshing and activating them, else you won't see Movers.
bTweakMHFactory	bChkMHFactAttack This Factory can work as a Trigger (if you don't have a clue about this feature), while Factory can be touched nasty by a monster - the rest of items spawned are pushed in combat	Some mappers think that Monster is Bot or such brain-sh!t so we have badly messed up settigs. We are about to solve all 2 stock Factories screwed with a normal setup... Enhancements might be welcomed...

	against another maybe the same monster type - lousy battling - by using this, we make a factory to get a start only by Player types, preventing monsters to do a mess.	
bXCPostNavHck	-	Simple feature that can recover Inventories lost from their InventorySpots after repeated using XC_PathBuilder which seems to mess them up after a second XC type paths build in whatever XC version - This is part of XC Engine if you have heard of it... Hint ! By using this feature even if everything is normal you can restore cylinder collisions for items which were screwed as another option. This feature is used in rare cases and it needs advanced actor editing stuff for figuring if bug has been encountered else it's not needed.
bBoostAmmo3X	-	Discarding regenerators "rule", this map might have a game play as it is, however, because stuff for MH battling might be a lot, ammo from map might have a 3X load and 3 times faster default RespawnTime (if you know what the heck is about, if not - read mapping tutorials !!! And learn stuff after years of doing TRASH)
bHideSpriteActors	-	Actors having Sprite type diplay (lights, triggers, etc) are going to be set for not being shown - purpose is to look at map closer to how do it looks in game. We are taking in account default set ones not customized ones.
bUnHideSpriteActors	-	Actors previously "hidden" are going to be shown back.
bReplaceActor	<p>ReplaceType Typing Actor's Class Name exactly, and Editor will complete it... Actor that needs replaced.</p> <p>WithType Using a class from a package previously loaded typing class name, also Editor will complete entire class definition for Actor used as replacement for above one.</p>	Wheew ! Self explanatory... This is able to replace something from map with another thing (that has to be loaded first in Editor !!!). As a sample, we can replace a nasty PupaeWarrior having errors with a default one letting admins to do the usual server tuning. A lot of actors are suitable for this task including one from MyLevel with other from MyLevel.
bSPawnTweaks	<p>MaxHealthAllowed Separate feature for removing 4,000,000 Health from whatever Dinosaur from whatever "joke" type mapping idea. Must specify value or else it will cap to 100,000 by default.</p>	This is pointed to ScriptedPawn types - monsters. In random moments of checking stuff, you'll find dumb settings done at monster properties, might be hard to check each monster one by one. These settings might go very unhealthy for a game-server. You can adjust a few of them (or more).
bNoRotateWeapon	<p>ChangedRespawn As an add-on, we can define RespawnTime for weapons, visible when server/game is being set with bWeaponStay False - I'm not gonna explain 2 pages what is about...</p>	Pretty useful for mapper who wants Weapons to stay without rotating. Some of those turds were screwing up things making mutators to get messy and even the game-play, because they have no clue about Editor and UScript anyway.
bTrySolveLocation	-	Addressing common actors mapped which are intended to stay in space using FIXED values for their X,Y,Z Location in 3D space rather than floating numbers which are involving additional bits for no purpose. It's a sort of align to grid.
bRoundCylinder	-	Again a feature for fixed values rather than floating ones for actors. Some decorations, Queen as sample might use those X.999967 things for their collision cylinder and are really pointless for processing collisions. Collision is rounded to a nearby integer value, there is nothing messed up here.
bReportActors	-	This feature will print in Editor.log file all actors used in Level + how many they are. If you known bad packages with screwed up Actors you can track log and then searching for those added in Map and deleting them once located.
bShowSpecs	-	This is a debugger for paths before to test route in game. Usually a suspect PathNode might block entire route for Pawn. If you have a suspect or you are curious about whatever point how is connected with nearest Nodes, this feature will report connections from that node and to that node and navigation conditions for pawn roamer - should swim, jump, etc. Default reachFlags are explained in more friendly

		format using words, but also with numbers returned, and an explained legend is logged too for any advanced examination. Common navigation flags are shown.
bCheckItems	-	<p>This feature is used for testing how are placed Inventories in map, for a DM map if items are in walls or such, InventorySpot is not added and that's not a target for Bots. Then builder will try to adjust their location and logging this action. If builder did not solved problem, you can track evil stuff by checking log.</p> <p>First check is detecting in default technology, will work in order to gain InventorySpot over Inventory, if not, will try by shrinking tester pawn somehow like DevPath does. If it's not successfull, it will be reported accordingly.</p> <p>Scout didn't fit - is a message for a bad inventory which might be detected by this builder.</p> <p>Majority of maps are working somehow using shrinking and Editor can map paths here, but they can be RED paths in such case. Builder is enough accurate at this point predicting paths (recommending this usage before building paths) as a debugger for preventing more junks in map based on multiple builds.</p>
bHidePlStarts	HoleLength - value for hiding into ground of those buggers in order to not be mapped as valid paths. I'm using 9000 or less or, depending on map. And should stay the same for next command done after pathing map.	<p>This feature might be used when map has a high load in a spot - more NavigationPoint type actors which might cause ugly pathing bugs. This is addressing PlayerStart - for MH takes in account SpawnPoints (aerial placement has no purpose) also QueenDest used by Queen type monster and being part of navigation array but they won't have paths as long as are burried into ground at predefined distance - see paramater. This has to be done BEFORE BUILDING PATHS. Next feature will bring back buggers after - to do after creating paths if this feature was used before.</p>
bRestPlStarts	HoleLength - the same value for unhidding from ground of those buggers. It should be the same with previous command unless those points are going bugged remaining into void.	<p>This does the reversal action of previous feature described above. By using both of them in the same time mainly no visible action will occur. These are two different things. It uses the same value declared for recovering from ground of hidden stuff. Restoring points in original Location will be done AFTER BUILDING PATHS. If PlayerStarts are forget into void, map will be unplayable so here your logic has the word. Out of logic = A Junk UNR file, not MAP. So, when this feature is True, previous should be False and viceversa.</p> <p>Stages are as follows: Hide points buggers (above command), create paths, Unhide points buggers (current command). This builder has all needed features toward removing paths and building paths, so everything is doable from builder toggling values True/False.</p>
bStaticsReport	-	<p>This feature will track actors from map if are badly messed up by various "creative" ideas intended to be cool but ruining net play as long as map will not be the same as off-line, which means that a basic check for borks is addressing actors bStatic and bNodelete if are screwed up, so called edited aka mindlessly ruined. Actor original bStatic screwed up as movable won't be EVER seen in client, else a weapon set bStatic for no rotation will do sucks with mutators and such. Builder here will find borks reporting them and then you can roll back evilized actors to original stage and doing the right setup. MapGarbage has a feature mentioned before for locking weapons rotation in a friendly format and not noob style.</p>
bScanCTFAltPaths	-	<p>This is a check addressing CTF maps for AlternatePath actors - usually map has a better A.I. play if it do includes such things. Also it's a good thing if they are balanced well. All info will be logged.</p>
bSimAltPathPicking	aTeam - this is specification for which Team is tested AlternatePath picking.	<p>Here we have a CTF simulator in how a Bot might pick an AlternatePath after Re-Spawn or not picking one. It uses a similar code from CTF controller adapted into builder. A single check is done by pressing build button once, with this option set. Each time when build button is pressed we are simulating a Bot respawned picking such thing like it does in a CTF match so if you want to check what is about definitely build button has to be pressed many times. I think this feature will except good minutes spent testing a CTF map in run-time. In Editor, in a single minute you might figure how are sorted AlternatePath actors.</p> <p>Another test would be when Bot is flag carrier but</p>

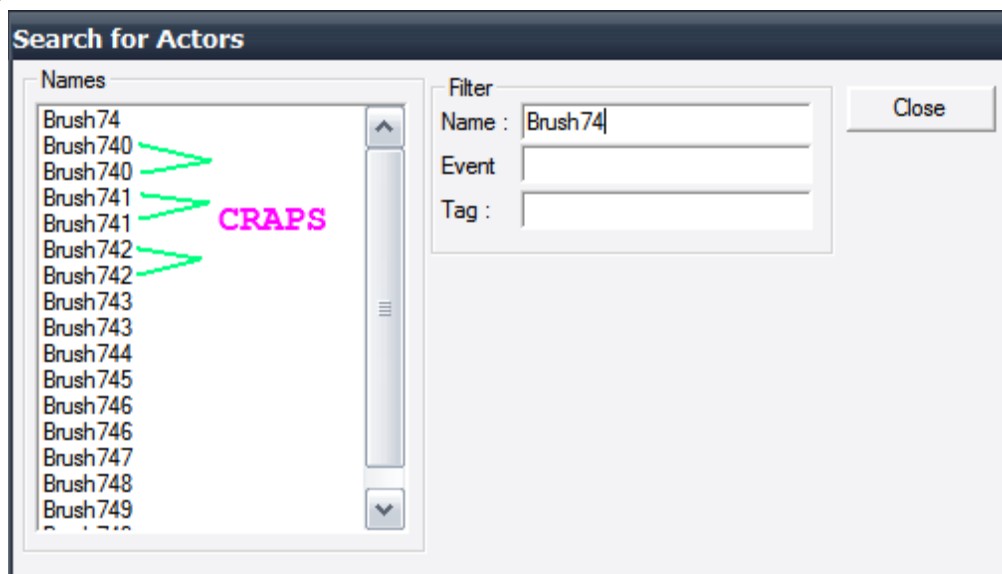
		that thing has to be implemented first. Probably these tests are way pretty conclusive.
bRemoveNoReachPaths	-	This option removes from the navigation points the items listed as visible and inaccessible paths by creatures that cannot fly to reach them and who do not have any navigation specifications not even if they could fly, these points may have directives to reach the current point, but the current point has no reachSpecs for reaching them. I have successfully removed these references and I have had no problem, maybe I just got a smaller map talking about the size on disk.
bCheckDuplicates	bRemoveDuplicates - this is a sub-option for check and will cause attempting a removal of duplicated actors.	Checking map for duplicated actors - for me those maps are not healthy. This is a different option, you will want to take in account GreenNote about this option.
bPurgeDupes2	-	Used for a direct cleaning in a fresh loaded map - will cause duplicates to have a NONE tag. This is an alternate cleaning solution.
bScanTeamStarts	-	Can be used for CTF maps for checking how many PlayerStart actors are assigned for each team in order to balance start locations. Results are logged - see console log.
bFindVoidBuggers	-	It causes a report toward actors placed into void which have no usage that way - items, navigationpoints, lights, decorations, etc.
bcheckZones	-	This will look if map has zoning problems, it shows when two or multiple ZoneInfo actors are in the same zone because map has leaks or has a bad setup.
bDisconnectN1toN2	- N1 N2 - parameters being NavigationPoint's names for the path that has to be nulified. Must be defined or else nothing will be done.	As shown in name, the path going from NavigationPoint1 to NavigationPoint2 will be removed from Paths list and UpStreampaths. This is addressing those paths making a bad angle with a ledge and closer to a wall where Bot has problem or jumping is causing loops. ReachSpec exist in map but is removed from navigation like in the case of TranslocDest done via stock UScript. We can use this option for Lift Combos where bot is jumping and takes a lot of damage restricting him from using that down-way - eg. Disconnecting Path from a LiftExit to a LiftCenter and Bot will go only from LiftCenter to LiftExit because reversal is nulified. More explained in BlueNote .
bScanDefences	-	Performing a check for Team-Games specific maps in order to count defensepoint actors - how many they are for each team. Option will assign some textures visible to these actors for being well visible. By using this option again, they are reverted back to default texture.
bStaticDecos	-	Some maps have destructible decorations set to static. These usually create fragments that abuse the engine operation because once set to bStatic, they are not removed and continue to produce fragments. In order not to ruin the look and the idea, we stabilize these SELECTED decorations and marked bStatic = True by transforming them into blockers that do not cause any problems, being customized exactly as the original decoration and removing it from the stage. So we dispose of the garbage made by these altered decorations.
bCountReachSpecs	-	Explanation from the initial phase. The engine has as constant in defining the navigation paths 3000 specifications of navigation called ReachSpecs. I am inclined to believe that these specifications are about the same in processing a route instigated by a being/creature/pawn. If the map has more than 3000 ReachSpecs - a larger or more crowded one in navigation points - it does not surprise me to see the creatures behaving strangely when they follow a target, in other words when jumping over the capacities coded as constants in the engine we do not have the right reactions while running the game. Some of these constants crash the game when it passes the defined limitations, for example Max_Points in rendering operations. These ReachSpecs are counted, including shortcuts, these shortcuts are not shown by the Editor in graphical mode but this builder shows them if we randomly study some navigation points - we are talking about maps that have the classic navigation network. This helps us to simplify navigation a bit, to place items after processing the navigation, or to simplify it in various ways to limit ourselves to the

	value of 3000 ReachSpecs. Until we build a clean network we can use this builder to destroy the old navigation and everything in the form of garbage specifications, saving, shutting down the Editor, reloading and setting up a navigation network as simple as possible.
--	-----------------------------------------------------------------------------------------------------------------------------------------------------------------------------------------------------------------------------------------------------------------------------

GreenNote:

bCheckDuplicates is addressing to perform a check into whatever Level for duplicated actors. After this check Editor has to be closed without saving map. This happens because behind this check you might have some Tags changed and you don't want any modification here - this was a strategy in hunting duplicated actors because they are really Evil in several cases. If builder has logged duplicated actors you might record some names of duplicated actors before cleaning them, Eg: Brush740.

Cleaning task: Editor restarted, map opened, builder set to **True** for both these bools **bCheckDuplicates** and **bRemoveDuplicates** and push build button. At end of task (if Editor is alive) **SaveAs** map with another name (using suffix **_healed** or such). Close Editor and restart it, load map cleaned and look for those Actors recorded like Brush740. This way I used because Evil duplicated might go in deletion stage after a supposed cleaning done in multiple steps. When map is saved like that you might see those duplicates vanished at next load, gone for good. That's why cleaning must be done in this contest in a single move and fresh loaded map for preventing unwanted deletions. Product resulted should have other name saved immediately in order to keep original map if builder has failed the cleaning task. As an EndNote I used this builder to check a crusher map with said 68 Duplicated Actors - **DM-!DSF!-Harbour-Nights-v3-Rm.**



In cleaned map you are supposed to open advanced properties for such an old duplicated actor by writing in console something like in sample below

```
editactor name="Brush740"
```

if nothing happens, then said example Brush740 is gone, or if you can see it in map definitely it might be **bDeleteMe** and it will be lost soon (by copy-pasting it into a text editor you can see what I mean) - happens if you check and clean and re-clean map multiple times in the same editing session. If you don't want to screw up actors, clean a fresh loaded map and save it as a temporary map. If temporary map reloaded in another fresh session is good, then cleaning was successfull. Once again, make sure about a copy of evil map, if you fail cleaning perhaps an alternate solution might help - manual washing MAP in TEXT format.

BlueNote:

There are more maps where you can see a Bot moving around an edge and hitting a wall, nothing happens in next minutes than retrying such a retarded move because path declared there is claimed navigable, but it's not when it

goes in that angle with edge. Starting from now on this builder is capable to remove such a path referenced in navigation network closing that route and making Pawn to follow another way instead of constantly messing up in spot. The simple way is to take in account named here Node1 and Node2 aka N1 and N2. It will be a single path removed, that one from N1 to N2 leaving Path from N2 to N1 untouched - but which can be disconnected later. All it needs is bool variable set to True and completing Names (under object property for these) of said two nodes - Editor will complete entire definition in the two TextBoxes. Log will say what `reachSpec` was there and removal action. Path-Line still can be seen because `reachSpec` is not removed from map but reference from nodes was removed as natively is doing TranslocDest in games that do not include translocator. This option can definitely remove any path direction and this way being capable to do real One-Way routes, for high lifts where moron Bot is dying by jumping, etc, etc. Editor is not so friendly with OneWay paths causing more or less PrunedPaths - shortcuts - which is very stupid. If mapper wants OneWay path he might have reasons for that - builder does help here. For stock maps and plain servers solution would be a Server-Actor helper in order to not screw stock maps but tweaking them in run-time. I cannot say that bad `reachSpec` reference cannot be removed manually when we are working at our map (some special case ?) but it's way easier to record two names, writing them, hitting button and... job done.

Setup for Editor:

U File goes to `System` folder, bmp icon file goes to `editorres` Folder from **System** (inside UT game used for modding) or whatever internal UT path for U files. After these file handling operations, proceed to edit `UnrealTournament.ini` file (default install). We have to find Section involving `EditPackages`, and adding after all those definitions a new one:

`EditPackages=MapGarbage`

like in this sample fragment:

```
EditPackages=TarquinBrushBuilders
EditPackages=RahnemBrushBuilders
EditPackages=DavesBrushBuilders
EditPackages=ExtendedBuilders
EditPackages=XC_Core
EditPackages=XC_Engine
EditPackages=XC_EditorAdds
EditPackages=MapGarbage
```

That's all, if your Editor is not badly screwed, you might see icon involved for working with new builder - yes, this is a custom so called BrushBuilder but it doesn't do any Brush Building. The above task is not required when we had a previous version installed - logically, the builder is already configured.

Post Notes:

Note 1): Advanced mappers probably don't need such tool - or they do because it's a debugger and helper.

Note 2): For uninstalling process, follow Installing steps in reverse.

Notes 3): Copyrights - All time I was "fascinated" about some Copyrights for an utter GARBAGE called Map Editor aka whatever Map Editing app. For me that is a toilette type application but it's needed in mapping - :/. Given some said MapPurger done by Gizzy I was doing a similar thing for my needs - and here it is, because I was reading about some ReplaceActor feature mentioned in a description (FALSE Information) but which never existed... and coding solution is similar.

Note 4): Enhancements and adds - Edit this tool and use it as you like...

a button pressed it's faster than editing actors.

Note 5): Some Update might come as needed - it won't mismatch anything. This is a tool for help editing Maps, not for Servers/Players so I'm not gonna spread 100 builder name types because are not needed multiple records but a single advanced one it's always welcomed.

Note 6) This is not a mapping tutorial, neither a MH related one, but it's a helper. If you have mapping experience not cube-drawing only, you might understand the purpose of this tool and how does it helps. If you don't know what Editor does having your mind into a complete fog, forget this tool. It is addressing to help mapping not for learning mapping.

Note 7) All builder specific features used in the same time are proving your insanity. All iterations and functions might go in opposite direction as first thing, and then iterations limit will crash your Editor. Each function of builder should be taken in account what it does and what it doesn't do.

Credits: In order of appearance: Epic, Mappers from Epic (with their funky pile of crap) I tested pathing add-ons in such Levels, Gizzy sampling such builder and "How To", Higor adding some light to my brain, Barbie helping me to translate numbers in words, team updating old Unreal to whatever v 227 showing me that fly reachFlag can be used in UT but UT Editor is too dumb for this planet, various UT mappers making me to write such tools.

Misc: I was informed that for MH fixes or nasty bugs detections there are way too many factors in account. Perhaps future version will have more options if worth efforts. Why ? Intention from now days is to go over engine boundaries and making more sh!t maps or creating more copies of the same trash and then for such works there are not too many things doable - to not forget stripping brushes and leaving a pile of crap called map, bugged and making fixing harder.